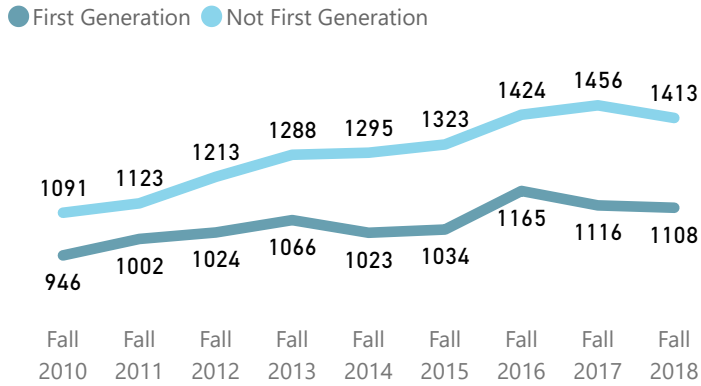


BCOE First Gen Profile

Total Population of First Gen Undergraduates

The first gen population has grown more slowly than the non-first gen



Distribution by Income Status

First gen students were much more likely to qualify for the low-income waiver

Fee Waiver Status	First Generation		Not First Generation	
	Headcount	% of column	Headcount	% of column
Not low income	500	45%	1166	83%
Low income	608	55%	244	17%
Total	1108	100%	1410	100%

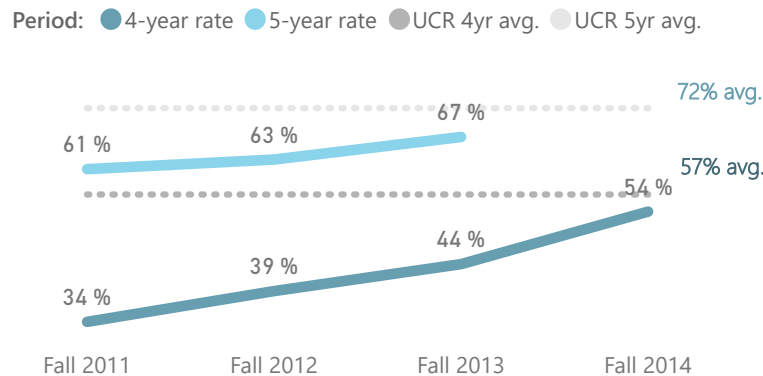
Original Entry Type

First gen students were a bit more likely to be transfers

Entry Type	First Generation		Not First Generation	
	Headcount	% of column	Headcount	% of column
Freshman Entrants	813	74%	1157	82%
Transfer Entrants	293	26%	255	18%
Total	1106	100%	1412	100%

Freshman Graduation Rates

BCOE first gen freshmen have been closing the graduation gap at the four- and five-year marks in the most recently measured cohorts



Who counts as first gen?

We define first generation using the reported highest education of a student's parents or guardians. If the student indicated that neither parent/guardian held at least a four-year college degree, we consider them first gen. Those who provided no information on parental education are not considered first gen (these make up about three percent of recent undergraduates).

Distribution by Ethnicity

First gen students are much more likely to be Chicano/Latino

Ethnicity	First Generation		Not First Generation	
	Headcount	% of group	Headcount	% of group
Asian	340	30.7%	689	48.8%
Chicano/Latino	568	51.3%	201	14.2%
White	106	9.6%	297	21.0%
Multiple Races	32	2.9%	117	8.3%
International	24	2.2%	56	4.0%
African American	27	2.4%	29	2.1%
Domestic Not Specified	9	0.8%	23	1.6%
Native American	2	0.2%	1	0.1%
Total	1108	100.0%	1413	100.0%

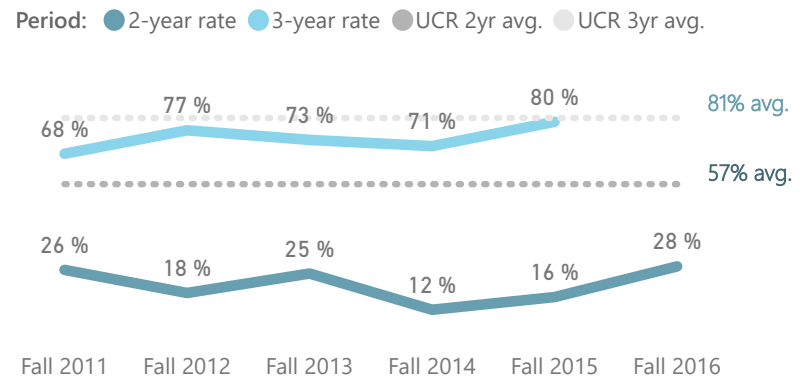
Distribution by Gender

There is no difference in the first gen status by gender within the college

Gender	First Generation		Not First Generation	
	Headcount	% of group	Headcount	% of group
Male	860	78%	1100	78%
Female	246	22%	309	22%
Total	1106	100%	1409	100%

Transfer Graduation Rates

First gen transfers have been approaching the university average within three years, but as with other BCOE transfers, the two-year rate is far below



More about first generation students in **BCOE**

Distribution by Location of Prior Institution

First gen students are more likely to come from local institutions

Local Origin	First Generation		Not First Generation	
	Headcount	% of group	Headcount	% of group
Los Angeles County	340	31%	367	26%
Other California	214	19%	442	31%
Riverside County	257	23%	218	15%
Orange County	74	7%	212	15%
San Bernardino County	172	16%	113	8%
Out-of-state	49	4%	60	4%
Total	1106	100%	1412	100%

Distribution by Major

There are minimal differences in pattern of major (programs with 10+)

Major	First Generation		Not First Generation	
	Headcount	% of group	Headcount	% of group
ENCS	229	21%	366	26%
MCEN	204	18%	192	14%
BIEN	114	10%	197	14%
ELEN	154	14%	141	10%
CHEN	140	13%	135	10%
CEN	93	8%	124	9%
ENEN	61	6%	49	3%
MSE	48	4%	44	3%
CSBA	19	2%	64	5%
CSBM	7	1%	23	2%
BEBM	5	0%	18	1%
ENUN	9	1%	14	1%
MCBM	5	0%	13	1%
ENGR	9	1%	6	0%
EEBM	3	0%	9	1%
CNBM	4	0%	6	0%
Total	1104	100%	1401	100%

Cumulative UCR Grade Point Average

First gen students on average earned modestly lower grades

UCR GPA	First Generation		Not First Generation	
	Headcount	% of group	Headcount	% of group
GPA of 3.5-4.0	181	17%	309	23%
GPA of 2.5-3.5	675	63%	892	65%
GPA of 2.0-2.5	161	15%	130	10%
GPA below 2.0	57	5%	32	2%
Total	1074	100%	1363	100%

High School GPA

First gen freshmen came in with slightly higher GPAs than non-first gen

HS GPA Range	First Generation		Not First Generation	
	Headcount	% of column	Headcount	% of column
GPA 3.75 and above	544	67%	744	65%
GPA 3.5 to 3.74	178	22%	253	22%
GPA 3.0 to 3.49	87	11%	151	13%
GPA 2.5 to 2.99	1	0%		
Total	810	100%	1148	100%

Transfer GPA

First gen transfers may also be a bit higher

Transfer GPA Range	First Generation		Not First Generation	
	Headcount	% of group	Headcount	% of group
GPA 3.5 to 4.0	47	16%	39	16%
GPA 3.0 to 3.49	157	55%	121	49%
GPA 2.5 to 2.99	76	26%	83	34%
Below 2.5	7	2%	3	1%
Total	287	100%	246	100%